



RIPLEY Model number: 25BLD28583AH20

3 beds • 2 baths • 1624 sq.ft. • 28' width • 58' depth

Our home building facilities invest in continuous product and process improvements. Plans, dimensions, features, materials, specifications and availability are subject to change without notice or obligation. Renderings and floor plans are representative likenesses of our homes and may differ from the actual homes. We invite you to tour a Home Center near you and inspect the highest value in quality housing available or call (423) 282-0343 to speak with a Home Consultant. Copyright 2017, CMH. All rights reserved.

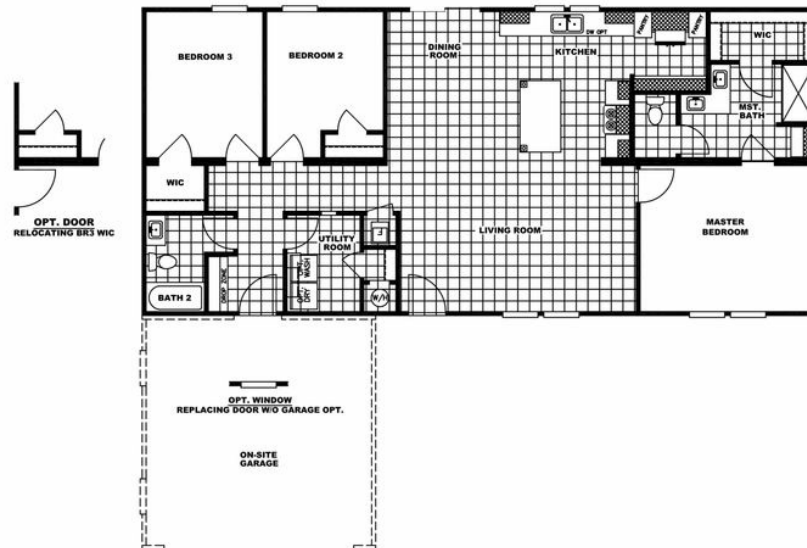
<https://www.claytonhomesofeasttn.com>

**CLAYTON HOMES-
JOHNSON CITY**

**3908 BRISTOL HIGHWAY
JOHNSON CITY, TN 37601**

Monday - Thursday: 9am - 6pm
Friday: 9am - 6pm
Saturday: 9am - 5pm
Sunday: Closed

(423) 282-0343



RIPLEY Model number: 25BLD28583AH20

3 beds • 2 baths • 1624 sq.ft. • 28' width • 58' depth

Our home building facilities invest in continuous product and process improvements. Plans, dimensions, features, materials, specifications and availability are subject to change without notice or obligation. Renderings and floor plans are representative likenesses of our homes and may differ from the actual homes. We invite you to tour a Home Center near you and inspect the highest value in quality housing available or call (423) 282-0343 to speak with a Home Consultant. Copyright 2017, CMH. All rights reserved.

<https://www.claytonhomesofeasttn.com>

**CLAYTON HOMES-
JOHNSON CITY**

3908 BRISTOL HIGHWAY
JOHNSON CITY, TN 37601

Monday - Thursday: 9am - 6pm
Friday: 9am - 6pm
Saturday: 9am - 5pm
Sunday: Closed

(423) 282-0343